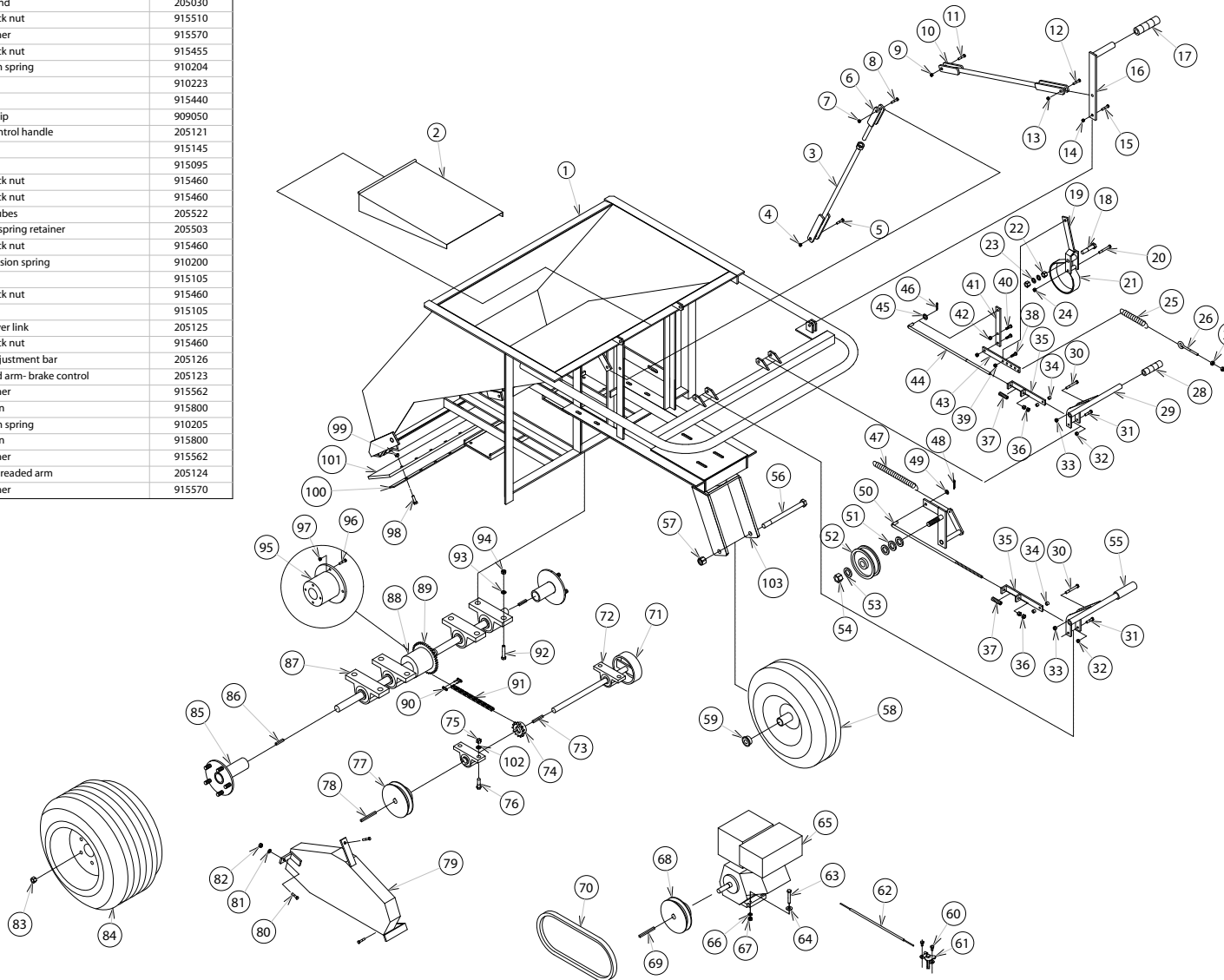


INDEX	NB.	DESIGNATION	REFERENCE
1	1	Main frame-36" wheels under	205160
2	1	Engine cover	205156
3	1	Gate flow control tube	205186
4	1	Nylon lock nut	915460
5	1	Bolt	915115
6	1	Gate flow control threaded bracket	205145
7	1	Nylon lock nut	915460
8	1	Bolt	915115
9	1	Nylon lock nut	915460
10	1	Primary gate opening control tube	205150
11	1	Bolt	915115
12	1	Bolt	915115
13	1	Nylon lock nut	915460
14	1	Nylon lock nut	915460
15	1	Bolt	915115
16	1	Gate control lever	205185
17	1	Platic grip	909050
18	1	Bolt	915300
19	1	Brake band release arm	205500
20	1	Bolt	915070
21	1	Brake band	205030
22	1	Nylon lock nut	915510
23	2	Flat washer	915570
24	1	Nylon lock nut	915455
25	1	Extention spring	910204
26	1	Eye bolt	910223
27	2	Nut	915440
28	1	Plastic grip	909050
29	1	Brake control handle	205121
30	2	Bolt	915145
31	4	Bolt	915095
32	4	Nylon lock nut	915460
33	2	Nylon lock nut	915460
34	4	Spacer tubes	205522
35	2	Bracket- spring retainer	205503
36	4	Nylon lock nut	915460
37	2	Compression spring	910200
38	1	Bolt	915105
39	1	Nylon lock nut	915460
40	2	Bolt	915105
41	1	Brake-lever link	205125
42	2	Nylon lock nut	915460
43	1	Brake-adjustment bar	205126
44	1	Threaded arm- brake control	205123
45	1	Flat washer	915562
46	1	Cotter pin	915800
47	1	Extention spring	910205
48	1	Cotter pin	915800
49	1	Flat washer	915562
50	1	Clutch threaded arm	205124
51	3	Flat washer	915570

INDEX	NB.	DESIGNATION	REFERENCE
52	1	Clutch Idler pulley	911250
53	1	Flat washer	915570
54	1	Nylon lock nut	915510
55	1	Clutch control handle	205120
56	1	axle-Bolt	915335
57	1	Nylon lock nut	915510
58	1	wheel	910305
59	2	Wheel bearing	910302
60	2	Self tapping screw	915000
61	1	Accelerator lever	910400
62	1	Accelerator cable and wire	205180
63	4	Bolt	915063
64	4	Flat washer	915560
65	1	Honda engine	109200
66	4	Lock washer	915635
67	4	Nut	915450
68	1	Sheave	911127
69	1	Key	911360
70	1	"V" belt	911045
71	1	Brake shaft assembly	205101
72	2	Bearing	911200
73	1	Key	911360
74	1	Sprocket	911304
75	4	Nut	915470
76	4	Carriage bolt	915120
77	1	Sheave	911170
78	1	Key	911360
79	1	Belt cover	205162
80	3	Bolt	915045
81	3	Lock washer	915635
82	3	Nut	915450
83	10	wheel nuts 1/2 nc	910350
		Wheel nut 1/2 fine thread	910351
84	2	wheel	910310
85	2	Wheel hub	205165
86	2	Key	911361
87	4	Bearing	911202
88	1	Differential -Reinforced c/w main sprocket	205190
89	1	Sprocket on differential	911324
90	1	full chain link	910100
91	1	drive chain x	205179
92	8	Carriage bolt	915110
93	8	Lock washer	915640
94	8	Nut	915470
95	1	Reinforcement casing -for differential	205195
96	4	Bolt	915045
97	4	Nylon lock nut	915455
98	6	Bolt	915095
99	6	Nylon lock nut	915460
100	1	Retainer bar -for rubber pad	205055
101	1	Rubber pad	205051
102	4	Lock washer	915640
INDEX	NB.	DESIGNATION	REFERENCE
103	1	Rear swivel bracket c/w bearing	205004



ALL SEASONS EQUIPMENT	
36 wheels under graveler	
	TONY LEAL
	DRW BY
OCT/06	36WU-PRT.DFT
DATE	DRW#
PARTS DRAWING	